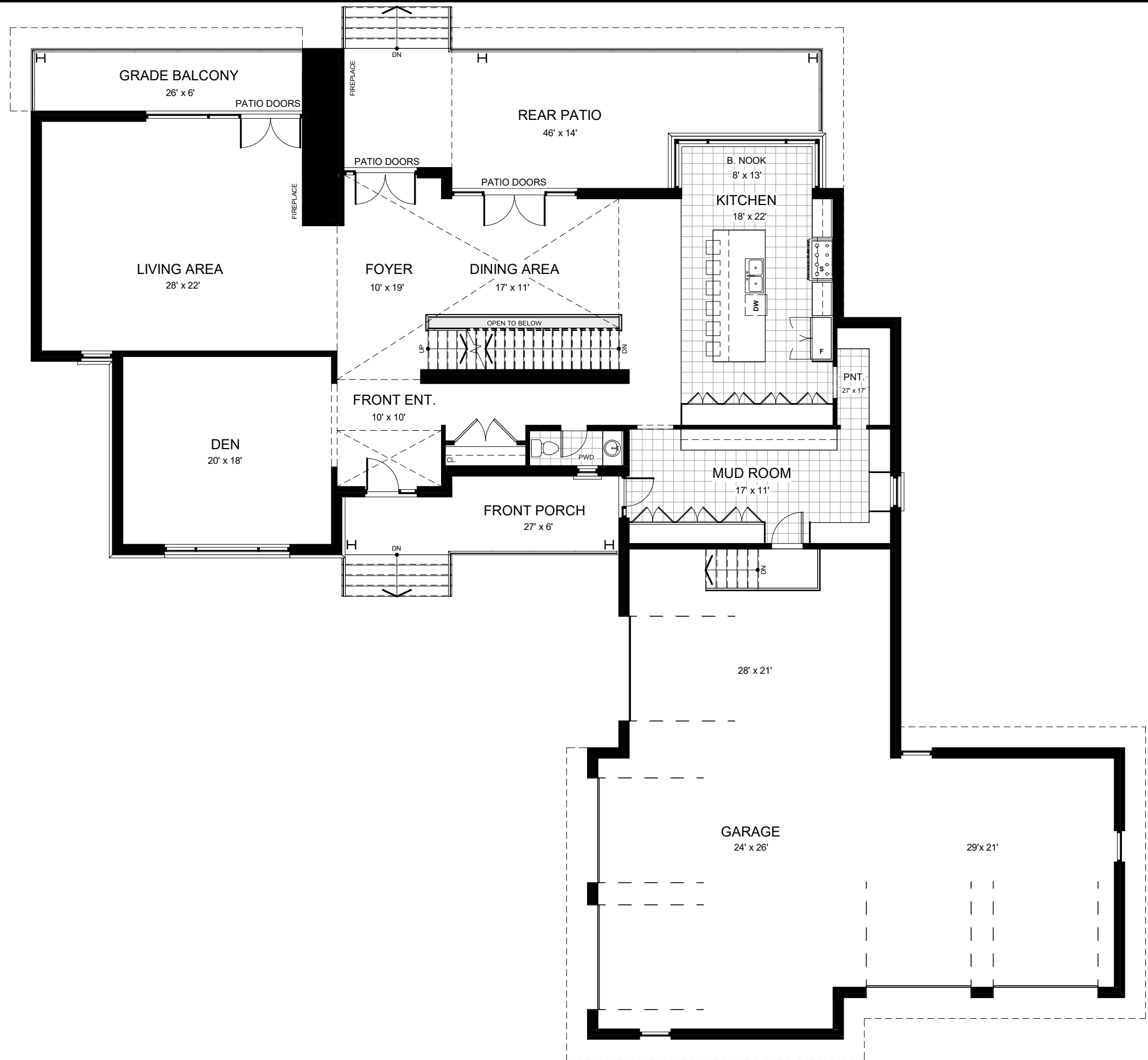


BASEMENT FLOOR

SCALE: 1" = 10'

TOTAL GFA: 5851 sq. ft.

PLANS PREPARED BY:
BARRY GOLDMAN ARCHITECT

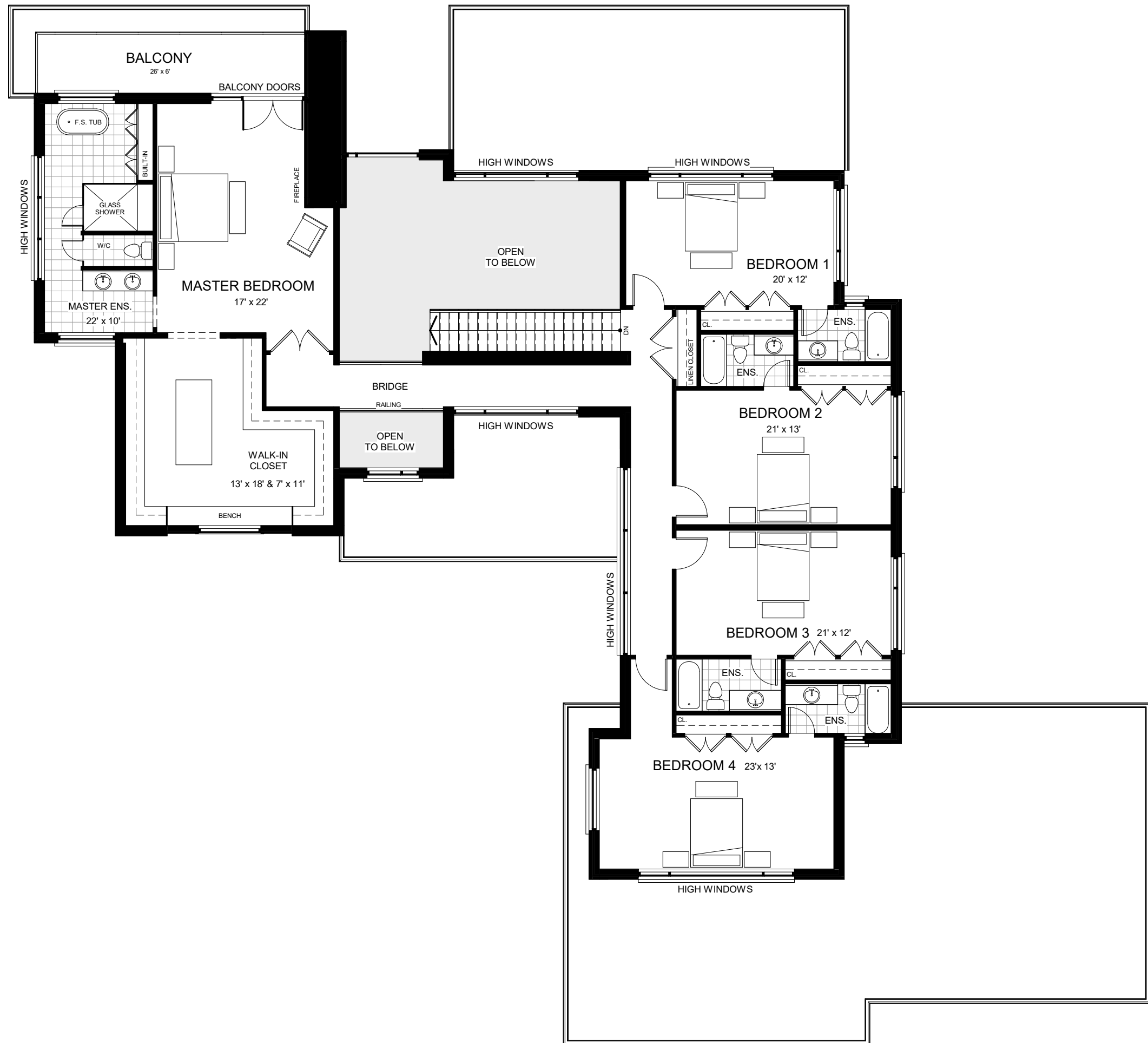


GROUND FLOOR

SCALE: 1" = 10'

FLOOR AREA: 2837 sq. ft.
 TOTAL GFA: 5851 sq. ft.

PLANS PREPARED BY:
BARRY GOLDMAN ARCHITECT



SECOND FLOOR

SCALE: 1" = 10'

FLOOR AREA: 3014 sq. ft.
 TOTAL GFA: 5851 sq. ft.

PLANS PREPARED BY:
BARRY GOLDMAN ARCHITECT