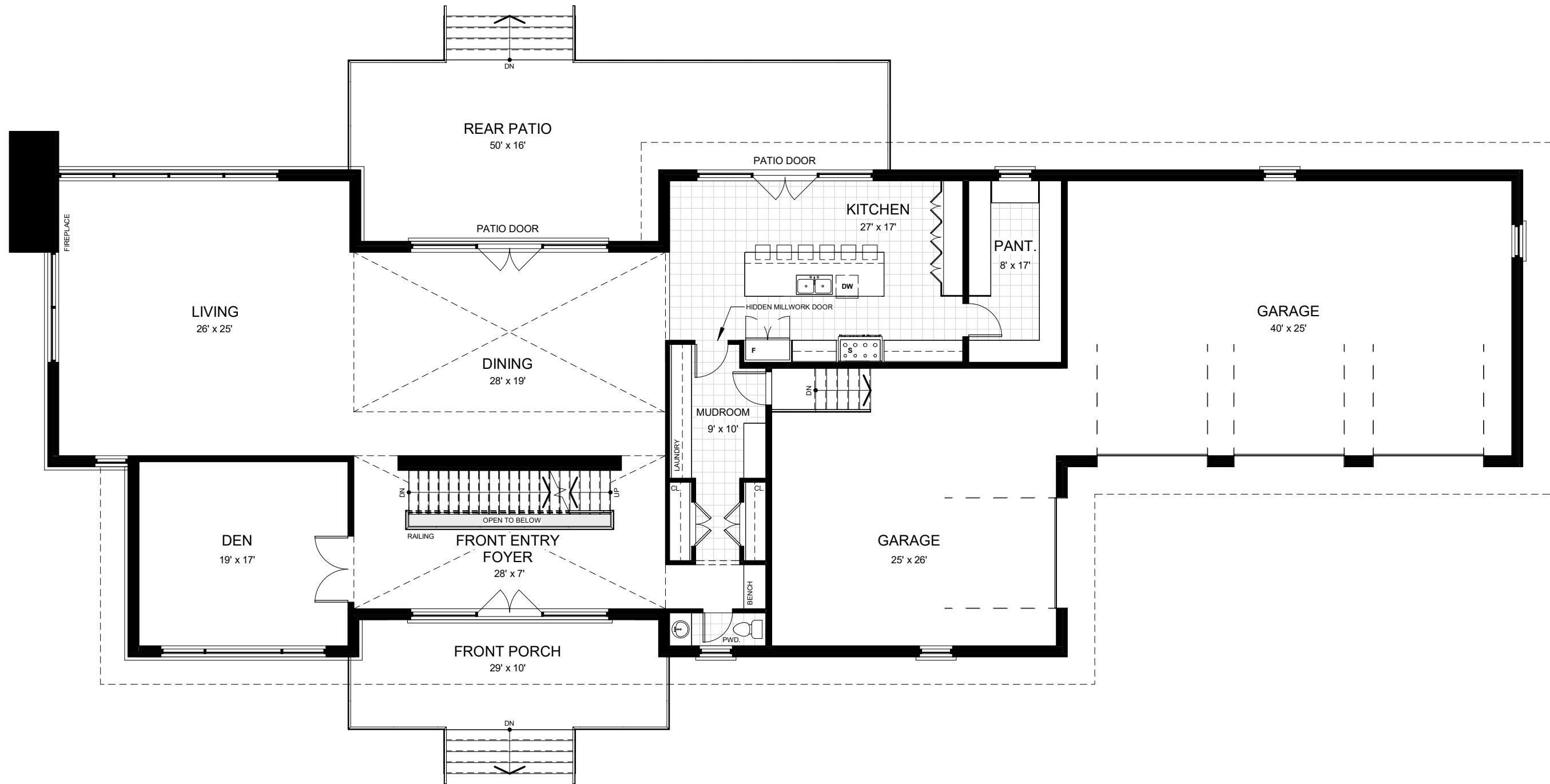


**BASEMENT FLOOR**

SCALE: 1" = 10'

TOTAL GFA: 5840 sq. ft.

PLANS PREPARED BY: **BARRY GOLDMAN ARCHITECT**

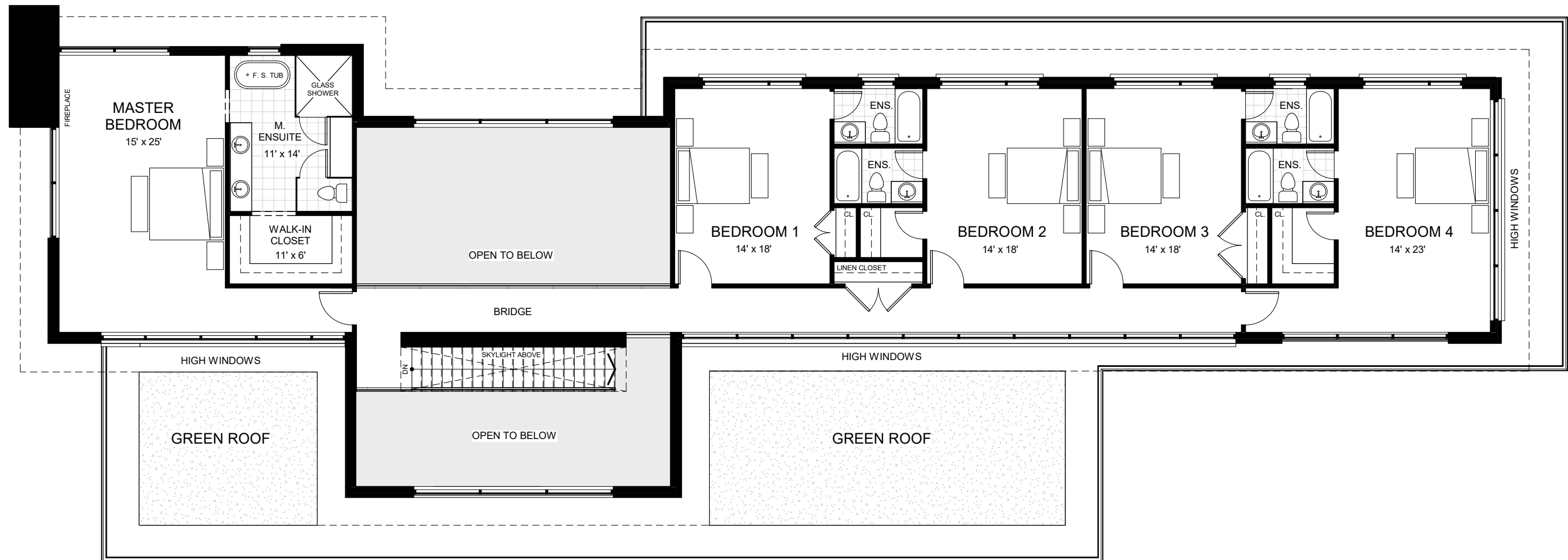


**GROUND FLOOR**

SCALE: 1" = 10'

FLOOR AREA: 3050 sq. ft.  
TOTAL GFA: 5840 sq. ft.

PLANS PREPARED BY: **BARRY GOLDMAN ARCHITECT**



**SECOND FLOOR**

SCALE: 1" = 10'

FLOOR AREA: 2790 sq. ft.  
 TOTAL GFA: 5840 sq. ft.

PLANS PREPARED BY: **BARRY GOLDMAN ARCHITECT**