

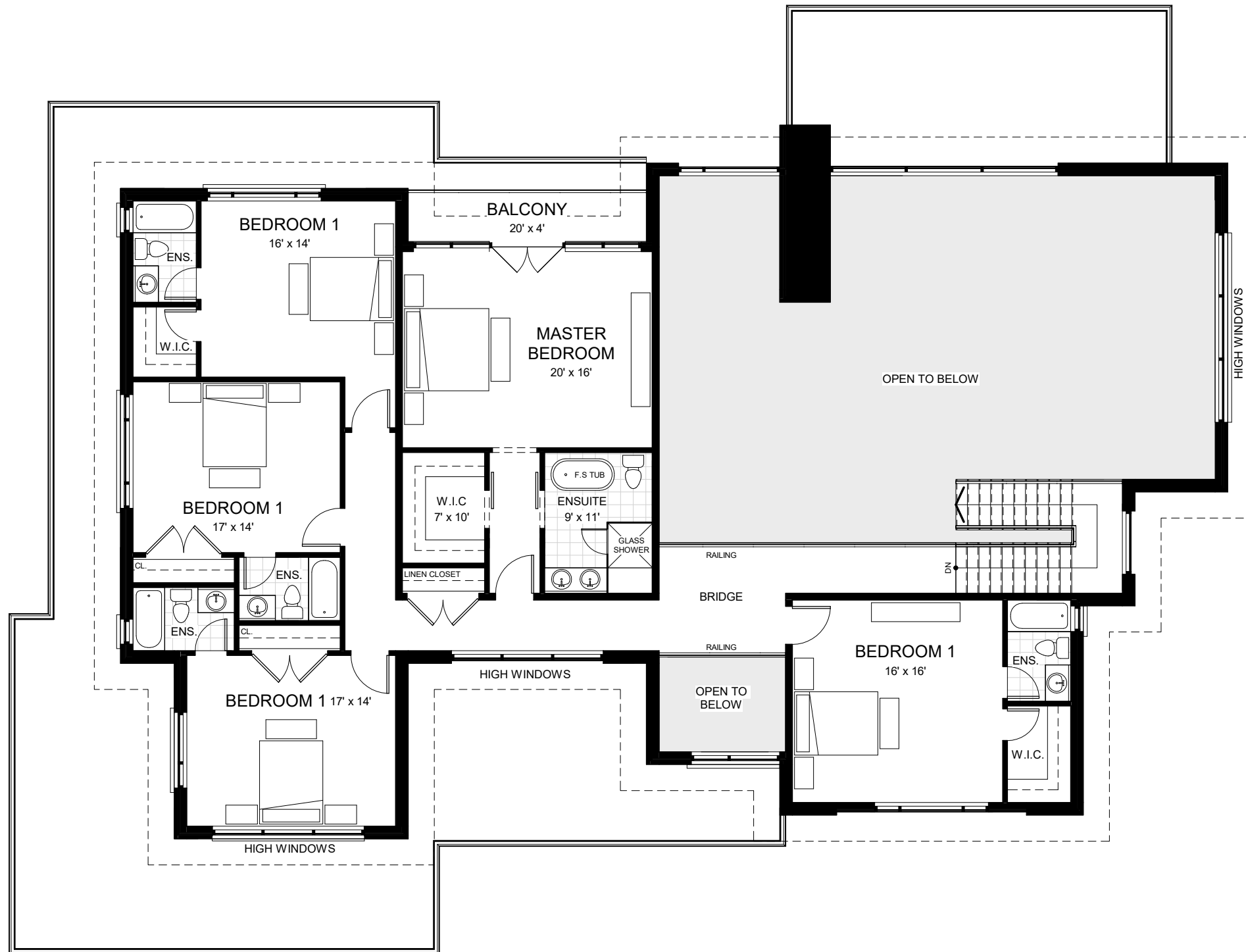
**BASEMENT FLOOR**

SCALE: 1" = 10'

TOTAL GFA: 5370 sq. ft.

PLANS PREPARED BY: **BARRY GOLDMAN ARCHITECT**





**GROUND FLOOR**

SCALE: 1" = 10'

FLOOR AREA: 2455 sq. ft.  
 TOTAL GFA: 5370 sq. ft.

PLANS PREPARED BY: **BARRY GOLDMAN ARCHITECT**