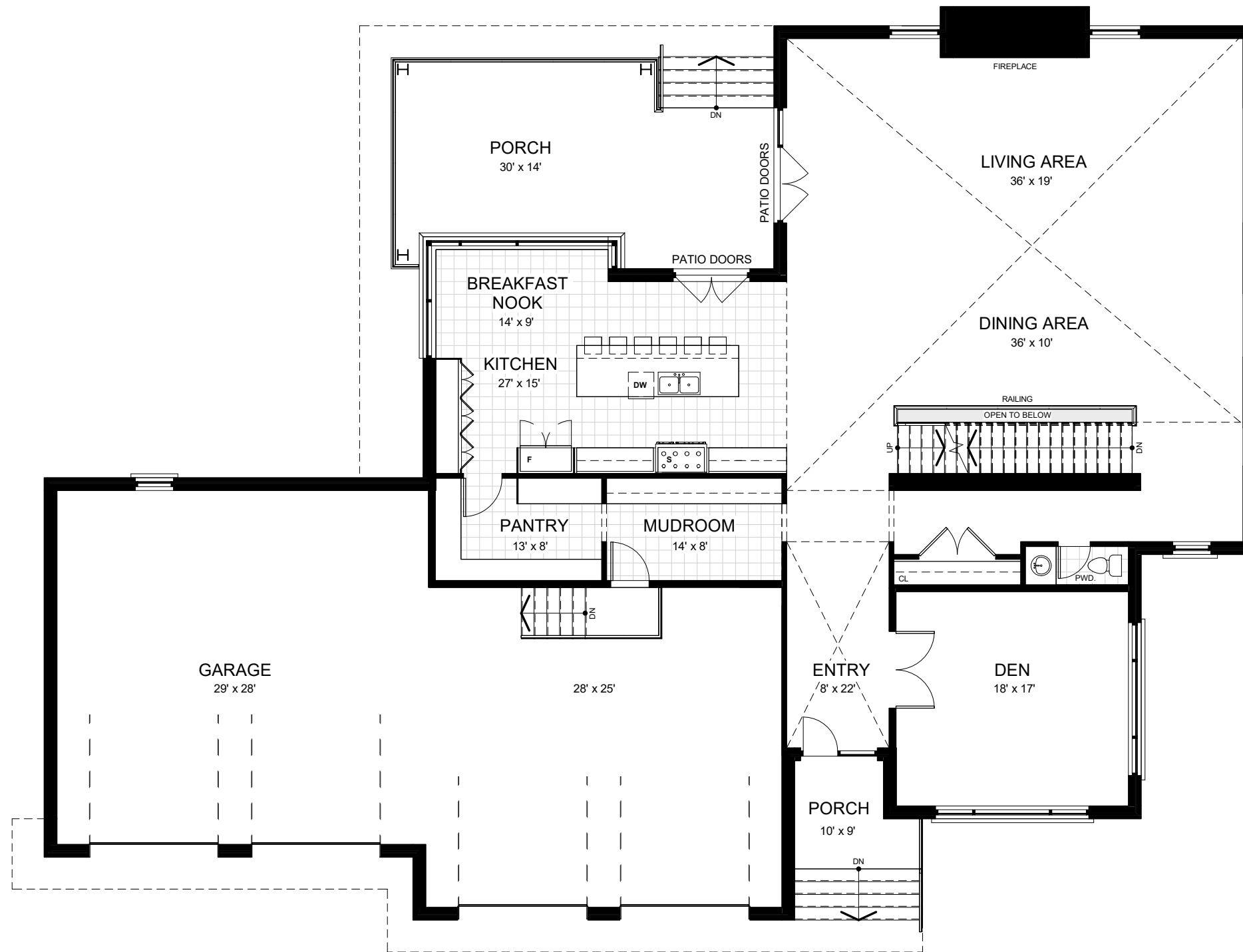


BASEMENT FLOOR

SCALE: 1" = 10'

TOTAL GFA: 5650 sq. ft.

PLANS PREPARED BY: **BARRY GOLDMAN ARCHITECT**



GROUND FLOOR

SCALE: 1" = 10'

FLOOR AREA: 2850 sq. ft.
 TOTAL GFA: 5650 sq. ft.

PLANS PREPARED BY: **BARRY GOLDMAN ARCHITECT**



GROUND FLOOR

SCALE: 1" = 10'

FLOOR AREA: 2800 sq. ft.
 TOTAL GFA: 5650 sq. ft.

PLANS PREPARED BY: **BARRY GOLDMAN ARCHITECT**