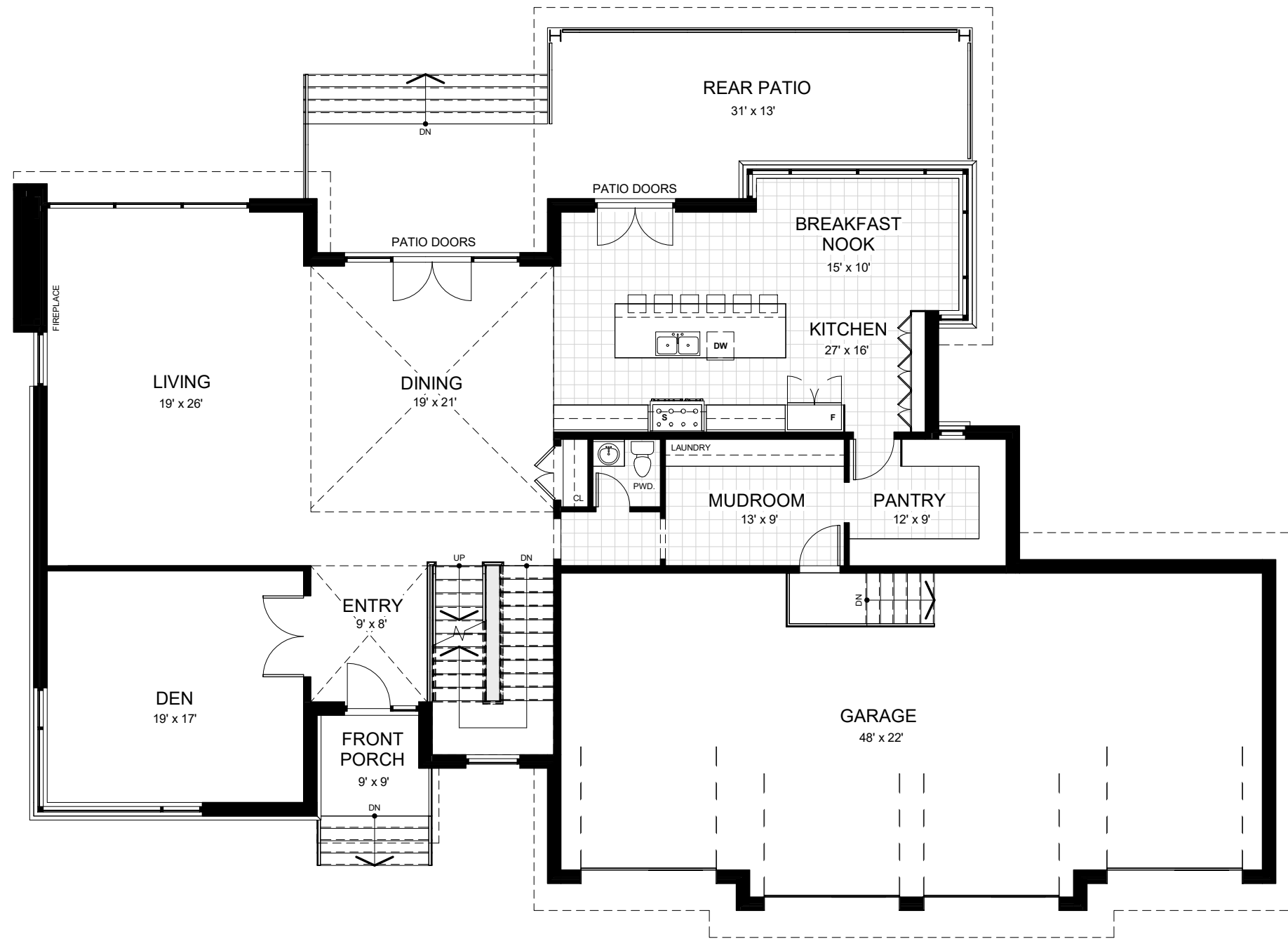


BASEMENT FLOOR

SCALE: 1" = 10'

TOTAL GFA: 5015 sq. ft.

PLANS PREPARED BY: **BARRY GOLDMAN ARCHITECT**

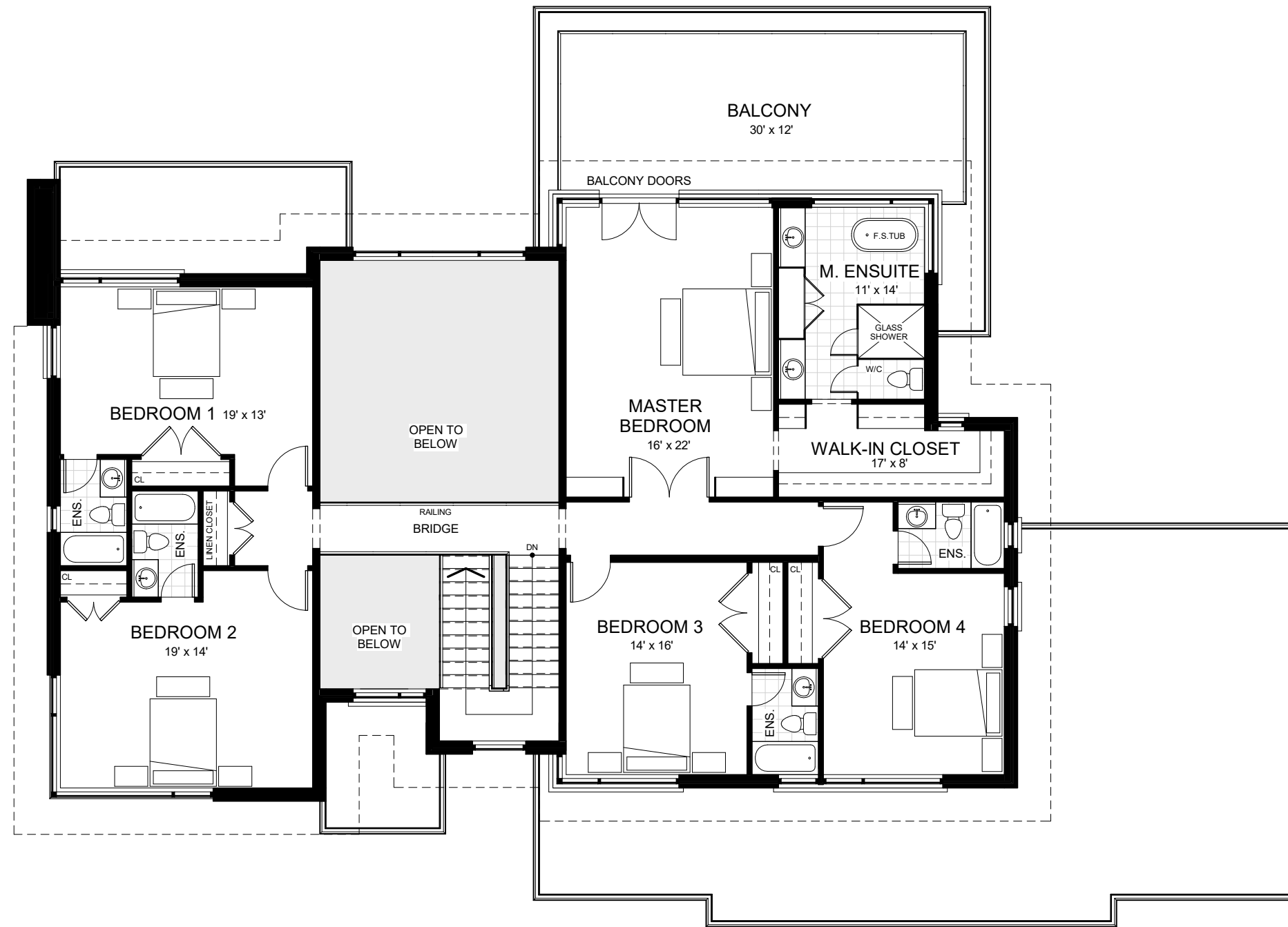


GROUND FLOOR

SCALE: 1" = 10'

FLOOR AREA: 2535 sq. ft.
TOTAL GFA: 5015 sq. ft.

PLANS PREPARED BY: **BARRY GOLDMAN ARCHITECT**



SECOND FLOOR

SCALE: 1" = 10'

FLOOR AREA: 2480 sq. ft.
 TOTAL GFA: 5015 sq. ft.

PLANS PREPARED BY: **BARRY GOLDMAN ARCHITECT**